
AMYLOIDOSIS

Edited by **Dali Feng**

INTECH

Contents

Preface VII

Section 1 History and Clinical Diagnosis and Typing 1

Chapter 1 **"Amyloid" – Historical Aspects 3**
Maarit Tanskanen

Chapter 2 **Diagnosis of Amyloidosis 25**
Cezar Augusto Muniz Caldas and Jozélio Freire de Carvalho

Chapter 3 **Cardiac Amyloidosis: Typing, Diagnosis, Prognosis and Management 33**
Glenn K. Lee, DaLi Feng, Martha Grogan, Cynthia Taub, Angela Dispenzieri and Kyle W. Klarich

Chapter 4 **Dialysis-Related Amyloidosis: Pathogenesis and Clinical Features in Patients Undergoing Dialysis Treatment 67**
Suguru Yamamoto, Junichiro James Kazama, Hiroki Maruyama and Ichiei Narita

Chapter 5 **Ocular Presentations of Amyloidosis 85**
Hesam Hashemian, Mahmoud Jabbarvand, Mehdi Khodaparast, Elias Khalilipour and Hamid Riazi Esfehiani

Section 2 The Mechanism of the Disease 111

Chapter 6 **Transthyretin-Related Amyloidoses: A Structural and Thermodynamic Approach 113**
Estefania Azevedo, Priscila F. Silva, Fernando Palhano, Carolina A. Braga and Debora Foguel

- Chapter 7 **Anti-Cytokine Therapy for AA Amyloidosis** 131
Keisuke Hagihara, Syota Kagawa, Yuki Kishida and Junsuke Arimitsu
- Section 3 The Advancement of Therapy** 153
- Chapter 8 **Treatment of End Stage Heart Failure Related to Cardiac Amyloidosis** 155
Tal Hasin, Eugenia Raichlin, Angela Dispenzieri and Sudhir Kushwaha
- Chapter 9 **Diagnosis and Treatment of AA Amyloidosis with Rheumatoid Arthritis: State of the Art** 187
Takeshi Kuroda, Yoko Wada and Masaaki Nakano
- Chapter 10 **Therapeutic Strategies in Amyloid A Amyloidosis Secondary to Rheumatoid Arthritis** 213
Tadashi Nakamura

Pre

Amyl
amyl-
cases
that f
monc
type,
type
dary
Dialy
incre
vide
dead

Unfo
tient
miss
book
beco
tic d
nosis

I wo
on th
amyl
care

I wo
endl
stud
tors,
zo, J
beco
for h

Dialysis-Related Amyloidosis: Pathogenesis and Clinical Features in Patients Undergoing Dialysis Treatment

Suguru Yamamoto, Junichiro James Kazama,
Hiroki Maruyama and Ichiei Narita

Additional information is available at the end of the chapter

<http://dx.doi.org/10.5772/53390>

1. Introduction

Amyloidosis is defined as an insoluble protein fibril that is deposited, mainly, in the extracellular spaces of organs and tissues as a result of a sequence of changes in protein folding. Precursor proteins change their conformation that forms amyloid fibrils, then deposited amyloid induce organ damage with disease specific conditions.

To date, there are 27 types of amyloidosis known extracellular fibril proteins in human, and each amyloidosis is characterized amyloid protein precursor, systemic (S) or localized organ (L), and syndrome or involved tissues [1]. In the nomenclature, dialysis-related amyloidosis (DRA) is defined as β_2 -microglobulin-related ($A\beta_2M$) amyloid which precursor protein is β_2 -microglobulin (β_2 -m). It is associated to dialysis, a kidney replacement therapy, and deposits in systemic (S), mainly joint tissues [1].

Long-term dialysis treatment for end-stage kidney disease often induces the $A\beta_2$ -m amyloid deposition in mainly osteoarticular tissues that induces various disorders, such as carpal tunnel syndrome (CTS), destructive spondyloarthropathy (DSA), and cystic bone lesions as well as in systemic organs such as heart and gastrointestinal tract when disease advances. Several biomolecules including β_2 -m as well as clinical risk factors are thought to relate with $A\beta_2M$ amyloidogenesis (Figure 1). Recent progress of dialysis therapy has improved survival of dialysis patients, however, older age and long-term dialysis treatment may increase the onset and acceleration of DRA. In this article, we described about DRA focused on pathogenesis, clinical manifestations and treatment, and showed DRA is still one of serious complications for patients undergoing long-term dialysis treatment.

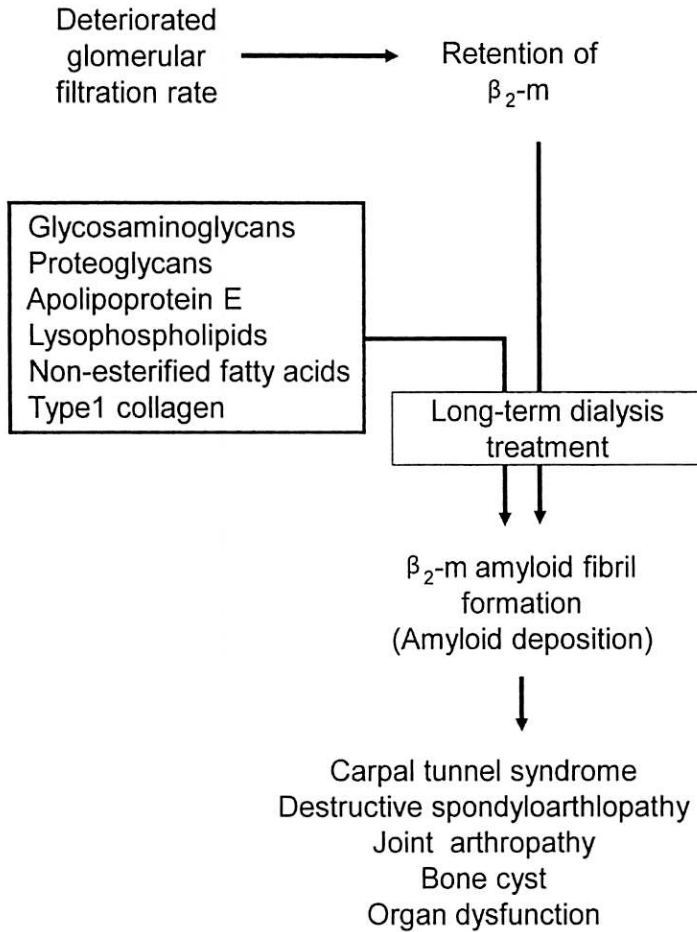


Figure 1. Pathogenesis of dialysis-related amyloidosis (DRA). DRA is induced not only accumulation of β_2 -microglobulin but also several biomolecules and clinical risk factors.

2. Pathogenesis of dialysis-related amyloidosis

2.1. β_2 -microglobulin

β_2 -m is a polypeptide of 99 residues that has a molecular weight of 11.8 kDa. It forms the beta chain of the human leukocyte antigen (HLA) class I molecule and has a well-known β -sandwich structure that involves a 7-strand β -pleated structure stabilized with a single

disulphide *in vitro* condition (SDS) [4], by Proper dose amyloid fib

2.2. Retenti

β_2 -m is a co β_2 -m is non catabolism serum due

Some clinic circulating | to end-stage intermediat 2.7 ± 1.4 mg/ using a pol decreased t [10]. These difficult to immobilize tissues (car phy-mass : cleaved and but not in demonstrat conformatio of DRA, an fibrils form

2.3. $A\beta_2$ -m

A nucleatio fibril forma phases, i.e., steps of mo step in amy addition of extension o association

In the mecl of protein i

disulphide bond (Cys25-Cys80). β_2 -m changes the conformation under various *in vivo* or *in vitro* conditions, such as acidic pH [2], 2,2,2-trifluoroethanol (TFE) [3], sodium dodecyl sulfate (SDS) [4], lysophospholipids [5], non-esterified fatty acids [6], heating [7] and agitation [8]. Proper dose of those molecules induce conformational intermediate that is required for $A\beta_2$ M amyloid fibril formation/extension (see below section).

2.2. Retention of conformational intermediate- β_2 -m

β_2 -m is a component of MHC class I molecules, which are present on all nucleated cells. Most β_2 -m is normally eliminated by the kidney via glomerular filtration and subsequent tubular catabolism with Megalin [9]. Thus, severe kidney damage induces the retention of β_2 -m in serum due to impaired excretion from the kidney.

Some clinical studies have attempted to identify the conformational intermediate form of circulating β_2 -m. Capillary electrophoresis reveals that patients undergoing hemodialysis due to end-stage kidney disease, but not healthy control subjects, have the conformational intermediate form of β_2 -m in serum [10]. The level of predialysis serum β_2 -m intermediate was 2.7 ± 1.4 mg/L and native β_2 -m was 29.4 ± 6.8 mg/L in 31 hemodialysis patients. Hemodialysis using a polymethylmethacrylate and online hemodiafiltration with a polysulfone membrane decreased the level of the native form, while any change in the intermediate form was variable [10]. These results suggest that intermediate β_2 -m is increased in hemodialysis patients and is difficult to remove with dialysis treatment. It may suggest that the intermediate form is immobilized in the extracellular space where $A\beta_2$ -m amyloid has a marked affinity for joint tissues (cartilage, capsule, and synovium). In addition, immunoaffinity-liquid chromatography-mass spectrometry analysis and immunoassay revealed the generation of lysine-58-cleaved and truncated β_2 -m ($\Delta K58$ - β_2 -m), which was found in serum from 20–40% HD patients but not in serum from control subjects [11]. However, this truncated form has not been demonstrated in the tissue containing $A\beta_2$ -m amyloid [12]. It is not certain whether the conformational intermediate or the truncated form of β_2 -m has a critical role of onset/progress of DRA, and future studies will be needed to understand the pathogenesis for $A\beta_2$ -m amyloid fibrils formation/extension.

2.3. $A\beta_2$ -m amyloid fibril formation and extension

A nucleation-dependent polymerization model explains the general mechanisms of amyloid fibril formation *in vitro*, in various types of amyloidosis [13–18]. This model consists of two phases, i.e., nucleation and extension phases. Nucleus formation requires a series of association steps of monomers, which are thermodynamically unfavorable, representing the rate-limiting step in amyloid fibril formation *in vitro*. Once the nucleus (n-mer) has been formed, further addition of monomers to the nucleus becomes thermodynamically favorable, resulting in rapid extension of amyloid fibrils according to a first-order kinetic model, i.e., via the consecutive association of precursor proteins onto the ends of existing fibrils [14, 17, 18].

In the mechanism of amyloidogenesis from β_2 -m, natively folded proteins, partial unfolding of protein is prerequisite to its assembly into amyloid fibrils [3, 13, 19, 20]. The extension of

microglobu-

is the beta
known β -
a single

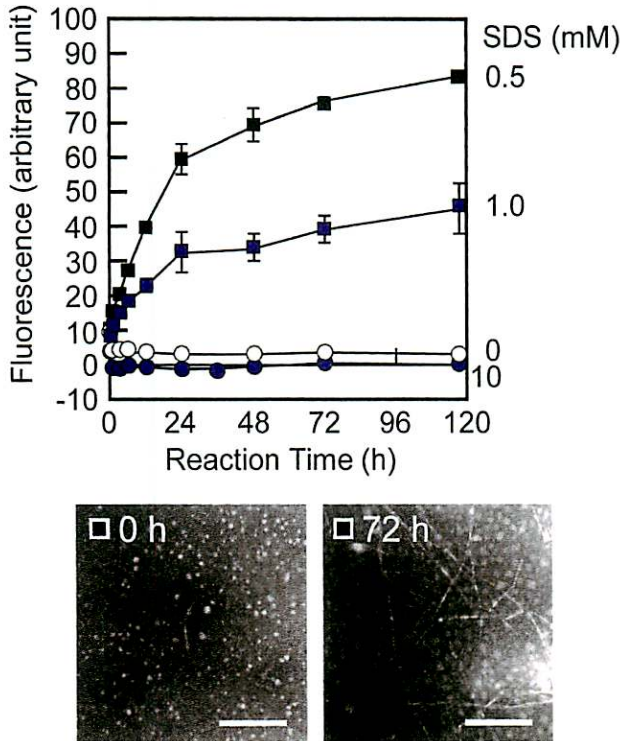


Figure 2. β_2 -microglobulin-related ($A\beta_2M$) amyloid fibril extension in vitro. Sub-micellar concentration of sodium dodecyl sulfate (SDS) induces $A\beta_2M$ amyloid fibrils extension at a neutral pH while micellar concentration induces amyloid fibril depolymerization in vitro. The amount of extended fibrils is measured by Thioflavin T (A), and observed by electron microscopy (B). Bar shows 250 nm.

$A\beta_2M$ amyloid fibrils, as well as the formation of the fibrils from β_2 -m are greatly dependent on the pH of the reaction mixture, with the optimum pH around 2.0-3.0 [13, 14]. At pH 2.5, where the extension of $A\beta_2M$ amyloid fibrils is optimum, β_2 -m loses much of the secondary and tertiary structures observed at pH 7.5 [13, 19]. $A\beta_2M$ amyloid fibrils readily depolymerize into monomeric β_2 -m at a neutral pH [19], however, low concentration of TFE [3] and sub-micellar concentration of SDS [4] induced $A\beta_2M$ amyloid fibrils extension with changing conformation of β_2 -m monomer and inhibiting depolymerization of amyloid fibrils at a neutral pH in vitro (Figure 2). While TFE and SDS are organic compounds, several biomolecules could induce $A\beta_2M$ amyloidogenesis in vivo, such as apolipoprotein E, proteoglycans, glycosaminoglycans, type1 collagen, non-esterified fatty acid, and lysophospholipids. [4-6, 21, 22]. For example, some lysophospholipids, especially lysophosphatidic acid (LPA) induces both

amyloid f
is due to
stabilizing
patients t
the local c
be reason
in chroni
amyloid c
cans and
was inhil
dermatan
proteogly
 $A\beta_2M$ am
results su
amyloid f
widely u:
difference
peritonea
and age a
effect for

Those mc
and depo
ship betw

2.4. Progn

It is not c
Deposited
amyloid c
through s
tion thro
the expe
ligand (R
expressio

3. Clini

3.1. Seru

Advance
and excre
undergoi
2 mg/L) [

amyloid fibril formation and extension at a neutral pH [5]. The mechanism of amyloidogenesis is due to make β_2 -m monomer into partially unfolding the compact structure as well as stabilizing the extended fibrils in vitro. Clinically, plasma LPA concentration is higher in patients undergoing hemodialysis treatment as compare to healthy subjects [5]. It's unclear the local concentration of lysophospholipids in the lesion that $A\beta_2M$ amyloid deposits, it may be reasonable to consider the reaction between β_2 -m and lysophospholipids that are increased in chronic kidney disease (CKD) undergoing dialysis treatment. Joint tissues that $A\beta_2M$ amyloid deposits at early stage in dialysis patients, contains many kinds of glycosaminoglycans and proteoglycans. Depolymerization of $A\beta_2M$ amyloid fibrils at a neutral pH in vitro was inhibited dose-dependently by the presence of some glycosaminoglycans (heparin, dermatan sulfate or heparin sulfate) or proteoglycans (biglycan, decorin or keratan sulfate proteoglycan) [21]. In addition, some glycosaminoglycans, especially heparin, enhanced the $A\beta_2M$ amyloid fibril extension induced by low concentration of TFE at a neutral pH [3]. These results suggest that some glycosaminoglycans and proteoglycans stabilize extended $A\beta_2M$ amyloid fibrils possibly by binding directly to the surface of the fibrils in vivo. Heparin is widely used for the hemodialysis treatment as an anticoagulant. Although no significant difference in the prevalence of $A\beta_2M$ amyloidosis was found between continuous ambulatory peritoneal dialysis patients and hemodialysis patients carefully matched for time on dialysis and age at the onset of dialysis [23], our study may suggest that heparin could exert a subtle effect for the development of $A\beta_2M$ amyloidosis under some clinical conditions.

Those molecules are picked up from the results of in vitro amyloid fibril formation, extension, and depolymerization, and further studies will be needed to analyze the histological relationship between those biomolecules and $A\beta_2M$ amyloid in the lesion.

2.4. Progress of bone disease after deposition of amyloid fibrils

It is not clearly understood the progress of bone disease after deposition of amyloid fibrils. Deposited amyloidosis induces compression that induced CTS and joint arthropathy. Also amyloid deposition induces local osteolysis that induced bone cysts and DSA. The progress through synovial inflammation and subsequent osteoclastogenesis and/or osteoclast activation through three possible pathways: (i) indirect action of inflammatory cytokines through the expression in osteoblasts of receptor activator of nuclear factor- κ B ligand/osteoprotegerin ligand (RANKL/OPGL), (ii) direct action of inflammatory cytokines, and (iii) RANKL/OPGL expression in inflammatory cells.

3. Clinical manifestations

3.1. Serum β_2 -m levels in patients undergoing dialysis treatment

Advanced CKD induces the serum level of β_2 -m to elevate due to the impaired metabolism and excretion in the kidney. The average serum concentration levels of β_2 -m in patients undergoing dialysis is significantly higher compared to those in normal subjects (25–45 vs. 1–2 mg/L) [10, 24–27]. It is clearly understood that the impairment of metabolism in the kidney

sodium do-
duces amy-
observed by

ependent
at pH 2.5,
secondary
polymerize
and sub-
changing
t a neutral
les could
glycosami-
l, 22]. For
aces both

is the main cause of fluid retention in HD patients; however, it is not clear whether the production of β_2 -m is increased with CKD and/or dialysis treatment. However, a study shows that the amount of β_2 -m on the surface of granulocytes, lymphocytes and monocytes in hemodialysis patients is higher than that in control subjects while mRNA expression of β_2 -m in blood cells is no significant difference between them [28]. This result shows the possibility that increased binding of β_2 -m to blood cells is one of major cause of retention of β_2 -m in dialysis patients. Thus continuous higher serum levels of β_2 -m could induced DRA after long-term dialysis treatment [24, 29].

3.2. Risk factors of DRA

Risk factors of DRA are (i) long-term dialysis treatment, (ii) initiation dialysis treatment in young age, (iii) hemodialysis treatment with low purity dialysate, (iv) use of low-flux dialysis membrane [30], while the pathogenesis of DRA with those risk factors is still incompletely understood. Recently it has trend to use high-flux dialysis membrane and high purity dialysate in hemodialysis treatment. However, progress of dialysis treatment as well as treatment for other diseases makes better survival of dialysis patients and older initiation of dialysis treatment. Thus long-term and old age dialysis patients increase, and DRA is still one of serious complications for patients undergoing dialysis treatment.

Serum level of β_2 -m, precursor protein of DRA, increase in dialysis patients and is believed most important for onset and progress of DRA. While cross sectional study shows no relation between onset of DRA and serum level of β_2 -m [24], DRA may be onset after accumulation of β_2 -m with long duration of dialysis treatment [29].

3.3. Clinical manifestations

Long-term dialysis treatment for end-stage kidney disease often induces the $A\beta_2$ -m amyloid deposition in mainly osteoarticular tissues that induces various disorders, such as CTS, DSA, and cystic bone lesions as well as in rarely systemic organs such as heart [31] and gastrointestinal tract [32] when disease is advanced. CTS is induced by the deposition of $A\beta_2$ -m amyloid around synovium in carpal tunnel and the compression of median nerve. DSA is induced by the deposition of $A\beta_2$ -m amyloid and the defect of bone in spine. It is radiographically characterized by severe narrowing of the intervertebral disk space and erosions as well as cysts of the adjacent vertebral plates. DSA lesions are mostly detected in the highly mobile areas, such as C5–C7 and L3–L5 [33]. Cystic lesions occur in bones, such as carpal and femur that $A\beta_2$ -m amyloid deposition is found around them. Cystic lesions as well as mineral bone disorder associated with CKD increase the risk of bone fracture.

DRA, induce various osteo-articular disorders, is one of serious complications in patients undergoing long-term dialysis treatment even improvement of dialysis treatment such as dialysis membrane and dialysate [34, 35]. For example, we researched over a four year period 359 end-stage kidney disease patients undergoing dialysis treatment were admitted in our center for the treatment of their dialysis-related complications [34]. DSA was a major cause of hospital admission in the patients undergoing dialysis therapy for 20 years or more, and the

rate increa
histories of
20-24 year
tively (Fig
rate of hist
respectivel
disorders (
disorders v
therapy es

80
60
40
20
C

Incident rate (%)

Figure
sis (DR
dialysi
nel syndrom
spectively.

rate increased along with the increasing duration of dialysis therapy. The incidence rate of histories of surgeries for osteoarticular disorders, related to DRA was 25.0, 66.0, and 77.8 % in 20-24 years, 25-29 years, and 30 years or more after the initiation of dialysis therapy, respectively (Figure 3). In the patients undergoing dialysis therapy for 30 years or more, the incidence rate of histories of surgeries for CTS, DSA, and joint arthropathy was 72.2%, 50.0%, and 22.2%, respectively that indicated they had analogous histories of surgeries for various osteoarticular disorders (Figure 4). These results indicate that the frequency and severity of osteoarticular disorders which may be caused by DRA accelerated with the increasing duration of dialysis therapy especially for the patients undergoing dialysis therapy for 30 years or more.

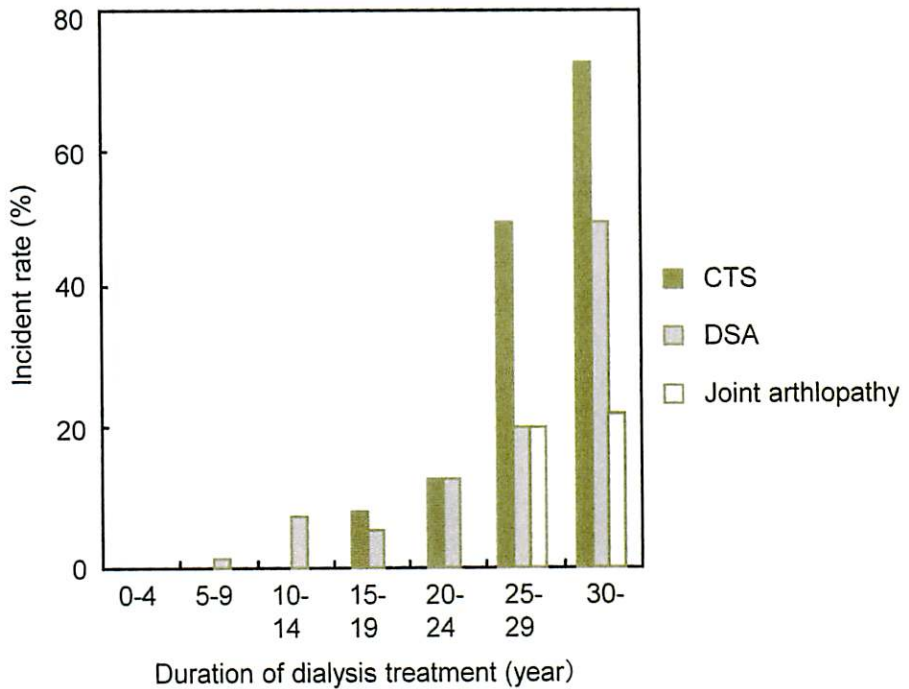


Figure 3. The incidence rate of histories of surgeries for osteo-articular disorders, related to dialysis-related amyloidosis (DRA). The rate is 25.0, 66.0, and 77.8 % in 20-24 years, 25-29 years, and 30 years or more after the initiation of dialysis therapy, respectively. In the patients undergoing dialysis therapy for 30 years or more, the rate for carpal tunnel syndrome (CTS), destructive spondyloarthropathy (DSA), and joint arthropathy was 72.2%, 50.0%, and 22.2%, respectively.

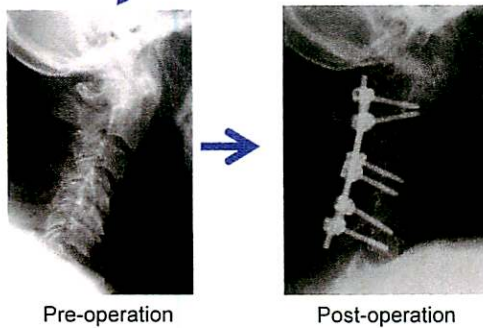
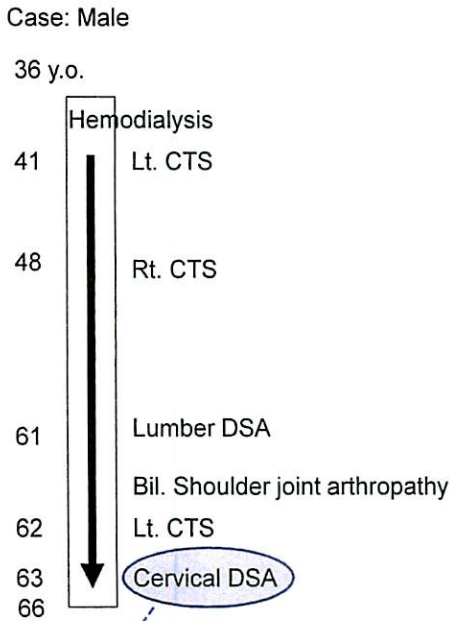


Figure 4. A case of long-term dialysis patients complicated with various osteo-articular disorders related to dialysis-related amyloidosis (DRA). A man had end-stage kidney disease due to chronic glomerulo nephritis and received hemodialysis treatment for 30 years. He had various DRA-related osteo-articular disorders, such as carpal tunnel syndrome (CTS), joint arthropathy, and destructive spondyloartholopahty (DSA) that needed surgical treatment.

Next, we researched 102 patients undergoing dialysis treatment for 30 years or more in our related hospitals, and their complication of osteoarticular disorders. The age at initiation of dialysis therapy was 27.3 ± 7.7 years, and the duration of dialysis therapy was 32.3 ± 1.8 years. The surgery for CTS was done for 80 patients (76%) in 21.6 ± 5.5 years after the initiation of

dialysis the
 some of the
 for 17 patie
 in the inci
 hospitals v
 teaching h
 however, i
 patients w
 most serio
 Further stu
 our studie
 DRA was
 therapy [3
 of the cons
 dialysis pa
 now use a
 since the i
 In summar
 which may
 in cases tre

4. Treatr

Main purp
 the lesions
 with dialy
 prevent th
 high-flux c
 hemofiltr
 reduce β_2 -
 dose of ste
 while use
 osteoporo
 osteoartic

4.1. Hemo

The use of
 compared
 serum β_2 -
 group. In
 reduced th

dialysis therapy. All of those patients received the surgeries more than 2 times, furthermore, some of them received more than 4 times for 30 years or more. The surgery for DSA was done for 17 patients (16%) in 27.1 ± 4.7 years after initiation of dialysis treatment. There is dissociation in the incidence of history of surgery for DSA between in our center [34] and in our related hospitals while that for CTS was similar. The main reason may be that our center is a university teaching hospital and severe patients are referred to our hospital. This is a major limitation, however, it should be remembered that one of the main causes for admission was DSA in the patients undergoing long-term dialysis therapy. Our results may suggest that DRA is one of most serious complications in the patients undergoing dialysis therapy for 30 years or more. Further study will be needed about the detail of DRA in the in long-term dialysis patients. In our studies, the main factor associated with osteoarticular disorders which may be caused by DRA was the duration of dialysis therapy despite the younger age at initiation of dialysis therapy [34]. Other risk factors, such as dialyzer and dialysate could not be considered because of the consistent improvements in the technologies from year to year. For example, long-term dialysis patients had used the low-flux dialyzer for several years since initiating therapy, but now use a high-flux dialyzer. Short-term patients however, have used the high-flux dialyzer since the initiation of dialysis therapy.

In summary of our clinical research, the frequency and seriousness of osteoarticular disorders which may be caused by DRA were accelerated with the duration of dialysis therapy, especially in cases treated for 30 years or more.

4. Treatment for DRA

Main purpose of treatment for DRA is a) to prevent the deposition of $A\beta_2$ -m amyloid fibrils in the lesions, and b) to relieve symptoms induced by $A\beta_2$ -m amyloid deposition. Remove β_2 -m with dialysis treatment and suppression of systemic/local inflammation are beneficial to prevent the deposition of $A\beta_2$ -m amyloid fibrils. Practically, it should be used biocompatible high-flux dialysis membrane and high purity dialysate in hemodialysis treatment. In addition, hemofiltration, hemodiafiltration, and use of β_2 -m adsorption column have much effect to reduce β_2 -m and to improve symptoms [36]. Non-steroidal anti-inflammatory drugs or low dose of steroid sometimes show relief of symptoms induced by $A\beta_2$ -m amyloid deposition while use of steroid for long duration has risk to induce adverse effect, such as infection and osteoporosis. Surgical treatments are needed when $A\beta_2$ -m amyloid deposition induces severe osteoarticular symptoms.

4.1. Hemodialysis/hemodiafiltration

The use of high-flux dialyzer membrane leads to a reduction in the serum level of β_2 -m as compared to using low-flux dialyzer membrane. In the HEMO Study [26], the predialysis serum β_2 -m level was lower in the high-flux membrane group than in the low-flux membrane group. In another study, switching of dialyzer from conventional to high-flux membrane reduced the predialysis serum β_2 -m level [37]. Clinically, K uchle et al [38] examined the effect

d to dialysis-
received he-
arpal tunnel
tment.

ore in our
itiation of
: 1.8 years.
itiation of

of polysulfone high-flux dialysis membrane in hemodialysis treatment, and showed less onset of CTS, arthropathy and bone cysts as well as lower concentration of serum β_2 -m as compare to use of low-flux dialysis membrane. The reason why high-flux membrane produces a lower level of serum β_2 -m is not only that it promotes better clearance, but that it also increases the binding of β_2 -m to blood cells, such as granulocytes, lymphocytes and monocytes [28]. High purity dialysate with low endotoxin reduced serum β_2 -m, pentosidine, C-reactive protein, and interleukin-6 [39] that probably accelerates $A\beta_2$ -m amyloid deposition.

Hemodiafiltration has better clearance of middle size molecules than HD and is known to reduce the risk of progression of DRA. A recent multicenter prospective randomized study revealed that on line HDF showed greater efficiency than HD with low-flux membrane in reducing the basal level of β_2 -m [40].

4.2. HD with β_2 -m adsorption column

A β_2 -m adsorption column has been developed as a way to directly eliminate serum β_2 -m. This adsorption column system is designed for direct hemoperfusion (Figure 5). Adsorption of β_2 -m by this column is a result both of hydrophobic and molecular size-dependent interactions between the ligand in the column and β_2 -m molecule. The effects of this column show the reduction rate; 60.0-78.9 %, the amount of adsorption; 157-300 mg, serum β_2 -m after treatment; 6.8-13.5 mg/L with single treatment [41-43].

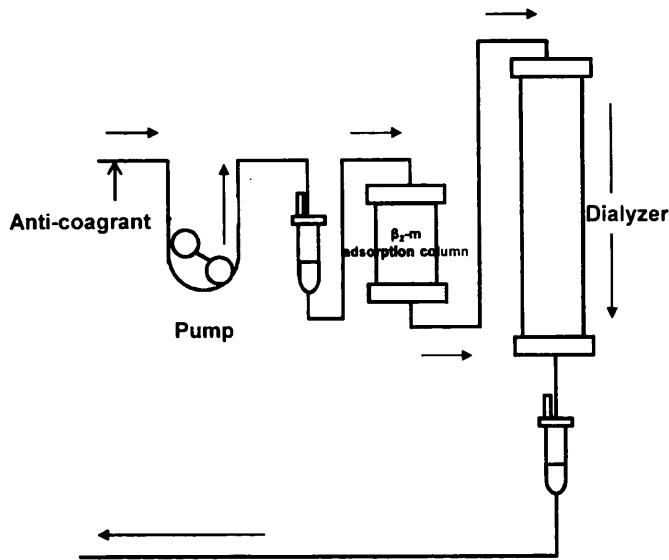


Figure 5. A schematic representation of hemodialysis treatment with β_2 -microglobulin (β_2 -m) adsorption column. The β_2 -m adsorption column is placed in series with the dialyzer, with blood flowing through the column first.

Accordin series wi hemodial This stud activity o other mo of bone c

4.3. Othe

A signific m level [4 of better : ysis. How significar and dialy for 5-10 y radical a symptom tation on nosuppre

4.4. Medi

Use of st will be n symptom undergoi tions, suc

5. DRA

Chronic l consists f tissue cal such as l patients t and speci It remain MBD. Ho preventir

less onset
; compare
es a lower
reases the
[28]. High
rotein, and

known to
zed study
nbrane in

β_2 -m. This
tion of β_2 -
teractions
show the
treatment;

column. The

According to a prospective multicenter study, a β_2 -m adsorption column that was placed in series with a polysulfone dialyzer increased serum β_2 -m reduction in patients undergoing hemodialysis as compare to hemodialysis treatment without β_2 -m adsorption column [42]. This study also showed improvements of DRA-related symptoms, such as joint pain and activity of daily living, and it may suggest that the column absorbs not only β_2 -m, but also other molecules related to inflammation. Furthermore, a clinical study showed shrink the size of bone cysts when they are checked by X-ray [43].

4.3. Other kidney replacement therapies

A significant inverse relationship is observed between residual renal function and serum β_2 -m level [44]. This suggests that peritoneal dialysis may keep lower serum levels of β_2 -m because of better maintenance of intrinsic renal function, but not peritoneal function, than hemodialysis. However the prevalence of histological DRA in peritoneal dialysis patients is not significantly different from that observed in a group of hemodialysis patients matched for age and dialysis duration [23]. End-stage kidney disease patients can do peritoneal dialysis only for 5-10 years, and it is difficult to discuss which treatment shows benefit to prevent DRA. A radical approach for DRA is kidney transplantation that reduces serum β_2 -m, improves symptoms related to DRA and inhibits the progression [45]. The effects of kidney transplantation on DRA probably due to not only recover of kidney function but also effect of immunosuppression therapy.

4.4. Medical and surgical treatment

Use of steroid shows beneficial effect for the pain induced by DRA while surgical treatment will be needed for advanced CTS and DSA. However, DSA induces serious neurological symptoms and it is sometimes hard to relief them with surgery. For example, 95 of 865 patients undergoing dialysis treatment had surgeries for DSA, while rate of post-operative complications, such as infection and cardiac events, was much higher than those without DSA [46].

5. DRA, a part of chronic kidney disease-mineral and bone disorder

Chronic kidney disease-mineral and bone disorder (CKD-MBD) is a systemic disorder, which consists from abnormal levels of mineral-related bicochemistries, bone abnormalities, and soft tissue calcification [47]. Various types of bone abnormalities are observed in CKD patients, such as high-turnover bone disease and osteomalacia. DRA causes bone abnormalities in patients undergoing dialysis treatment. Bone cyst, joint arthropathy, and DSA are frequency and specifically found in patients especially undergoing long-term hemodialysis therapy [48]. It remains controversial whether DRA and related osteopathy should be included in CKD-MBD. However, DRA is at least closely involved with CKD-MBD, from the view point of preventing osteoarticular complications in dialysis patients (Figure 6).

involvement
prevention

Author d

Suguru Ya

Department
Dental Scie

Blood Purif

Division of
Medical an

Referenc

[1] Sipe
bril
of tl
peri
of A

[2] Yan
ta2M
inte
the

[3] Yan
min
lin-

[4] Yan
con
lin-

[5] Ool
phc
amj

[6] Ha
et a
acic

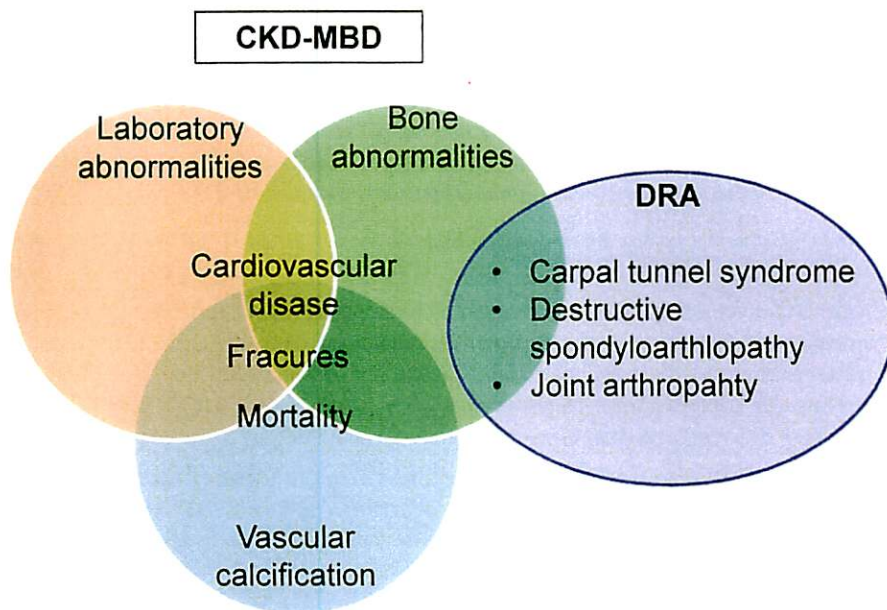


Figure 6. Dialysis-related amyloidosis (DRA) in chronic kidney disease-mineral bone disorder (CKD-MBD). CKD-MBD as well as DRA contains various types of bone abnormalities. Furthermore, β_2 -microglobulin/DRA may be involved with cardiovascular disease, bone fracture, and mortality which are clinical outcomes of CKD-MBD. In the view point of bone abnormalities, DRA may be related strongly with CKD-MBD.

CKD- MBD contains various types of bone abnormalities, such as high-turnover bone disease, osteomalacia, and adyanmic bone disease. DRA, such as bone cyst, joint arthropathy and DSA, also causes bone abnormalities and is included in renal osteodystorphy. Recently, some groups reported the relation between serum levels of β_2 -m and atherosclerosis [49] or mortality [26], thus β_2 -m/DRA may be involved with cardiovascular disease, bone fracture, and mortality which are clinical outcomes of CKD-MBD. In the view point of bone abnormalities, DRA related osteopathy may enhance the serious bone disorder, such as bone fractures and DSA, in the presence of other bone abnormalities, such as high-turnover bone disease and osteomalacia. DRA is a serious complication in patients who are receiving long-term dialysis therapy and obviously seems more harmful than other osteodystrophy in terms of maintenance of their ADL and quality of life. Further studies will be needed for this assumption.

6. Conclusion

DRA is still one of major and serious complications in end-stage kidney disease patients undergoing long-term dialysis treatment. Several biomolecules that may relate to $A\beta_2M$ amyloidogenesis are raised from in vitro studies, and that will be needed to investigate the

involvement in amyloid deposition in vivo. These findings will develop more beneficial prevention and treatment for DRA as well as improvement of dialysis treatment.

Author details

Suguru Yamamoto, Junichiro James Kazama, Hiroki Maruyama and Ichiei Narita

Department of Clinical Nephroscience, Niigata University Graduate School of Medical and Dental Sciences, Niigata, Japan

Blood Purification Center, Niigata University Medical and Dental Hospital, Niigata, Japan

Division of Clinical Nephrology and Rheumatology, Niigata University Graduate School of Medical and Dental Science, Niigata, Japan

References

- [1] Sipe JD, Benson MD, Buxbaum JN, Ikeda S, Merlini G, Saraiva MJ, et al. Amyloid fibril protein nomenclature: 2010 recommendations from the nomenclature committee of the International Society of Amyloidosis. *Amyloid : the international journal of experimental and clinical investigation : the official journal of the International Society of Amyloidosis*. 2010;17(3-4):101-4.
- [2] Yamaguchi I, Hasegawa K, Naiki H, Mitsu T, Matuo Y, Gejyo F. Extension of A beta2M amyloid fibrils with recombinant human beta2-microglobulin. *Amyloid : the international journal of experimental and clinical investigation : the official journal of the International Society of Amyloidosis*. 2001;8(1):30-40.
- [3] Yamamoto S, Yamaguchi I, Hasegawa K, Tsutsumi S, Goto Y, Gejyo F, et al. Glycosaminoglycans enhance the trifluoroethanol-induced extension of beta 2-microglobulin-related amyloid fibrils at a neutral pH. *J Am Soc Nephrol*. 2004;15(1):126-33.
- [4] Yamamoto S, Hasegawa K, Yamaguchi I, Tsutsumi S, Kardos J, Goto Y, et al. Low concentrations of sodium dodecyl sulfate induce the extension of beta 2-microglobulin-related amyloid fibrils at a neutral pH. *Biochemistry*. 2004;43(34):11075-82.
- [5] Ookoshi T, Hasegawa K, Ohhashi Y, Kimura H, Takahashi N, Yoshida H, et al. Lyso-phospholipids induce the nucleation and extension of beta2-microglobulin-related amyloid fibrils at a neutral pH. *Nephrol Dial Transplant*. 2008;23(10):3247-55.
- [6] Hasegawa K, Tsutsumi-Yasuhara S, Ookoshi T, Ohhashi Y, Kimura H, Takahashi N, et al. Growth of beta(2)-microglobulin-related amyloid fibrils by non-esterified fatty acids at a neutral pH. *Biochem J*. 2008;416(2):307-15.



KD-MBD as
involved with
new point of

a disease,
and DSA,
the groups
mortality
of DRA
and DSA,
and osteo-
n dialysis
of mainte-
nption.

patients
to Aβ₂M
investigate the

- [7] Sasahara K, Naiki H, Goto Y. Exothermic effects observed upon heating of beta2-microglobulin monomers in the presence of amyloid seeds. *Biochemistry*. 2006;45(29):8760-9.
- [8] Sasahara K, Yagi H, Sakai M, Naiki H, Goto Y. Amyloid nucleation triggered by agitation of beta2-microglobulin under acidic and neutral pH conditions. *Biochemistry*. 2008;47(8):2650-60.
- [9] Orlando RA, Rader K, Authier F, Yamazaki H, Posner BI, Bergeron JJ, et al. Megalin is an endocytic receptor for insulin. *J Am Soc Nephrol*. 1998;9(10):1759-66.
- [10] Uji Y, Motomiya Y, Ando Y. A circulating beta 2-microglobulin intermediate in hemodialysis patients. *Nephron Clin Pract*. 2009;111(3):c173-81.
- [11] Corlin DB, Johnsen CK, Nissen MH, Heegaard NH. A beta2-microglobulin cleavage variant fibrillates at near-physiological pH. *Biochem Biophys Res Commun*. 2009;381(2):187-91.
- [12] Giorgetti S, Stoppini M, Tennent GA, Relini A, Marchese L, Raimondi S, et al. Lysine 58-cleaved beta2-microglobulin is not detectable by 2D electrophoresis in ex vivo amyloid fibrils of two patients affected by dialysis-related amyloidosis. *Protein Sci*. 2007;16(2):343-9.
- [13] Kad NM, Thomson NH, Smith DP, Smith DA, Radford SE. Beta(2)-microglobulin and its deamidated variant, N17D form amyloid fibrils with a range of morphologies in vitro. *J Mol Biol*. 2001;313(3):559-71.
- [14] Naiki H, Hashimoto N, Suzuki S, Kimura H, Nakakuki K, Gejyo F. Establishment of a kinetic model of dialysis-related amyloid fibril extension in vitro. *Amyloid : the international journal of experimental and clinical investigation : the official journal of the International Society of Amyloidosis*. 1997;4:223-32.
- [15] Naiki H, Gejyo F, Nakakuki K. Concentration-dependent inhibitory effects of apolipoprotein E on Alzheimer's beta-amyloid fibril formation in vitro. *Biochemistry*. 1997;36(20):6243-50.
- [16] Jarrett JT, Lansbury PT, Jr. Seeding "one-dimensional crystallization" of amyloid: a pathogenic mechanism in Alzheimer's disease and scrapie? *Cell*. 1993;73(6):1055-8.
- [17] Naiki H, Higuchi K, Nakakuki K, Takeda T. Kinetic analysis of amyloid fibril polymerization in vitro. *Lab Invest*. 1991;65(1):104-10.
- [18] Naiki H, Nakakuki K. First-order kinetic model of Alzheimer's beta-amyloid fibril extension in vitro. *Lab Invest*. 1996;74(2):374-83.
- [19] Yamaguchi I, Hasegawa K, Takahashi N, Gejyo F, Naiki H. Apolipoprotein E inhibits the depolymerization of beta 2-microglobulin-related amyloid fibrils at a neutral pH. *Biochemistry*. 2001;40(29):8499-507.

- [20] Ke
ior
- [21] Ya
gly
loi
- [22] Re
str
enc
- [23] Jac
of
mc
- [24] Ge
ne
JM
- [25] Ike
val
glc
Ap
- [26] Ch
mi
stu
- [27] Ok
bet
mc
- [28] Tr:
bet
lyz
bu
43:
- [29] De
Sei
- [30] Da
Tr:
- [31] Ta
sis
20

beta2-mi-
06;45(29):
ed by agi-
hemistry.
Megaln
ate in he-
cleavage
Commun.
al. Lysine
n ex vivo
rotein Sci.
oglobulin
phologies
shment of
id : the in-
journal of
s of apoli-
chemistry.
myloid: a
:1055-8.
fibril poly-
d fibril ex-
E inhibits
eutral pH.

- [20] Kelly JW. Alternative conformations of amyloidogenic proteins govern their behavior. *Current opinion in structural biology*. 1996;6(1):11-7.
- [21] Yamaguchi I, Suda H, Tsuzuike N, Seto K, Seki M, Yamaguchi Y, et al. Glycosaminoglycan and proteoglycan inhibit the depolymerization of beta2-microglobulin amyloid fibrils in vitro. *Kidney Int*. 2003;64(3):1080-8.
- [22] Relini A, De Stefano S, Torrassa S, Cavalleri O, Rolandi R, Gliozzi A, et al. Heparin strongly enhances the formation of beta2-microglobulin amyloid fibrils in the presence of type I collagen. *J Biol Chem*. 2008;283(8):4912-20.
- [23] Jadoul M, Garbar C, Vanholder R, Sennesael J, Michel C, Robert A, et al. Prevalence of histological beta2-microglobulin amyloidosis in CAPD patients compared with hemodialysis patients. *Kidney Int*. 1998;54(3):956-9.
- [24] Gejyo F, Homma N, Suzuki Y, Arakawa M. Serum levels of beta 2-microglobulin as a new form of amyloid protein in patients undergoing long-term hemodialysis. *N Engl J Med*. 1986;314(9):585-6.
- [25] Ikee R, Honda K, Oka M, Maesato K, Mano T, Moriya H, et al. Association of heart valve calcification with malnutrition-inflammation complex syndrome, beta-microglobulin, and carotid intima media thickness in patients on hemodialysis. *Ther Apher Dial*. 2008;12(6):464-8.
- [26] Cheung AK, Rocco MV, Yan G, Leypoldt JK, Levin NW, Greene T, et al. Serum beta-2 microglobulin levels predict mortality in dialysis patients: results of the HEMO study. *Journal of the American Society of Nephrology : JASN*. 2006;17(2):546-55.
- [27] Okuno S, Ishimura E, Kohno K, Fujino-Katoh Y, Maeno Y, Yamakawa T, et al. Serum beta2-microglobulin level is a significant predictor of mortality in maintenance haemodialysis patients. *Nephrol Dial Transplant*. 2009;24(2):571-7.
- [28] Traut M, Haufe CC, Eismann U, Deppisch RM, Stein G, Wolf G. Increased binding of beta-2-microglobulin to blood cells in dialysis patients treated with high-flux dialyzers compared with low-flux membranes contributed to reduced beta-2-microglobulin concentrations. Results of a cross-over study. *Blood purification*. 2007;25(5-6):432-40.
- [29] Dember LM, Jaber BL. Dialysis-related amyloidosis: late finding or hidden epidemic? *Seminars in dialysis*. 2006;19(2):105-9.
- [30] Davison AM. beta 2-microglobulin and amyloidosis: who is at risk? *Nephrol Dial Transplant*. 1995;10 Suppl 10:48-51.
- [31] Takayama F, Miyazaki S, Morita T, Hirasawa Y, Niwa T. Dialysis-related amyloidosis of the heart in long-term hemodialysis patients. *Kidney international Supplement*. 2001;78:S172-6.

- [32] Araki H, Muramoto H, Oda K, Koni I, Mabuchi H, Mizukami Y, et al. Severe gastrointestinal complications of dialysis-related amyloidosis in two patients on long-term hemodialysis. *American journal of nephrology*. 1996;16(2):149-53.
- [33] Maruyama H, Gejyo F, Arakawa M. Clinical studies of destructive spondyloarthropathy in long-term hemodialysis patients. *Nephron*. 1992;61(1):37-44.
- [34] Yamamoto S, Kazama JJ, Maruyama H, Nishi S, Narita I, Gejyo F. Patients undergoing dialysis therapy for 30 years or more survive with serious osteoarticular disorders. *Clin Nephrol*. 2008;70(6):496-502.
- [35] Otsubo S, Kimata N, Okutsu I, Oshikawa K, Ueda S, Sugimoto H, et al. Characteristics of dialysis-related amyloidosis in patients on haemodialysis therapy for more than 30 years. *Nephrol Dial Transplant*. 2009;24(5):1593-8.
- [36] Nakai S, Iseki K, Tabei K, Kubo K, Masakane I, Fushimi K, et al. Outcomes of hemodiafiltration based on Japanese dialysis patient registry. *Am J Kidney Dis*. 2001;38(4 Suppl 1):S212-6.
- [37] Koda Y, Nishi S, Miyazaki S, Haginoshita S, Sakurabayashi T, Suzuki M, et al. Switch from conventional to high-flux membrane reduces the risk of carpal tunnel syndrome and mortality of hemodialysis patients. *Kidney Int*. 1997;52(4):1096-101.
- [38] Kuchle C, Fricke H, Held E, Schiffel H. High-flux hemodialysis postpones clinical manifestation of dialysis-related amyloidosis. *Am J Nephrol*. 1996;16(6):484-8.
- [39] Furuya R, Kumagai H, Takahashi M, Sano K, Hishida A. Ultrapure dialysate reduces plasma levels of beta2-microglobulin and pentosidine in hemodialysis patients. *Blood Purif*. 2005;23(4):311-6.
- [40] Pedrini LA, De Cristofaro V, Comelli M, Casino FG, Prencipe M, Baroni A, et al. Long-term effects of high-efficiency on-line haemodiafiltration on uraemic toxicity. A multicentre prospective randomized study. *Nephrol Dial Transplant*. 26(8):2617-24.
- [41] Gejyo F, Homma N, Hasegawa S, Arakawa M. A new therapeutic approach to dialysis amyloidosis: intensive removal of beta 2-microglobulin with adsorbent column. *Artif Organs*. 1993;17(4):240-3.
- [42] Gejyo F, Kawaguchi Y, Hara S, Nakazawa R, Azuma N, Ogawa H, et al. Arresting dialysis-related amyloidosis: a prospective multicenter controlled trial of direct hemoperfusion with a beta2-microglobulin adsorption column. *Artif Organs*. 2004;28(4):371-80.
- [43] Homma N, Gejyo F, Hasegawa S, Teramura T, Ei I, Maruyama H, et al. Effects of a new adsorbent column for removing beta-2-microglobulin from circulating blood of dialysis patients. *Contrib Nephrol*. 1995;112:164-71.

[44] Yi
nc
tic

[45] M
ve

[46] C
M
ar
st

[47] M
tic
K
15

[48] K.

[49] Zi
tr
pi

- [44] Yamamoto S, Kasai A, Shimada H. High peritoneal clearance of small molecules did not provide low serum beta2-microglobulin concentrations in peritoneal dialysis patients. *Perit Dial Int*. 2003;23 Suppl 2:S34-6.
- [45] Mourad G, Argiles A. Renal transplantation relieves the symptoms but does not reverse beta 2-microglobulin amyloidosis. *J Am Soc Nephrol*. 1996;7(5):798-804.
- [46] Chikuda H, Yasunaga H, Horiguchi H, Takeshita K, Kawaguchi H, Matsuda S, et al. Mortality and morbidity in dialysis-dependent patients undergoing spinal surgery: analysis of a national administrative database in Japan. *The Journal of bone and joint surgery American volume*. 2012;94(5):433-8.
- [47] Moe S, Drueke T, Cunningham J, Goodman W, Martin K, Olgaard K, et al. Definition, evaluation, and classification of renal osteodystrophy: a position statement from Kidney Disease: Improving Global Outcomes (KDIGO). *Kidney Int*. 2006;69(11):1945-53.
- [48] Koch KM. Dialysis-related amyloidosis. *Kidney Int*. 1992;41(5):1416-29.
- [49] Zumrutdal A, Sezer S, Demircan S, Seydaoglu G, Ozdemir FN, Haberal M. Cardiac troponin I and beta 2 microglobulin as risk factors for early-onset atherosclerosis in patients on haemodialysis. *Nephrology (Carlton)*. 2005;10(5):453-8.

re gastro-
ong-term

arthrop-

undergo-
lar disor-

aracteris-
for more

of hemo-
2001;38(4

al. Switch
nnel syn-
01.

es clinical
8.

te reduces
patients.

i A, et al.
toxicity. A
1617-24.

h to dialy-
t column.

Arresting
direct he-
Organs.

ffects of a
g blood of

Amyloidosis

<http://dx.doi.org/10.5772/46140>

Edited by Dali Feng

Contributors

Suguru Yamamoto, Junichiro Kazama, Hiroki Maruyama, Ichiei Narita, Jozélio de Carvalho, Tadashi Nakamura, Takeshi Kuroda, Keisuke Hagihara, Syota Kagawa, Junsuke Arimitsu, Yuki Kishida, Hesam Hashemian, Sudhir Kushwaha, Maarit Tanskanen, Fernando L. Palhano, Dali Feng

Published by InTech

Janeza Trdine 9, 51000 Rijeka, Croatia

Copyright © 2013 InTech

All chapters are Open Access distributed under the Creative Commons Attribution 3.0 license, which allows users to download, copy and build upon published articles even for commercial purposes, as long as the author and publisher are properly credited, which ensures maximum dissemination and a wider impact of our publications. However, users who aim to disseminate and distribute copies of this book as a whole must not seek monetary compensation for such service (excluded InTech representatives and agreed collaborations). After this work has been published by InTech, authors have the right to republish it, in whole or part, in any publication of which they are the author, and to make other personal use of the work. Any republication, referencing or personal use of the work must explicitly identify the original source.

Notice

Statements and opinions expressed in the chapters are those of the individual contributors and not necessarily those of the editors or publisher. No responsibility is accepted for the accuracy of information contained in the published chapters. The publisher assumes no responsibility for any damage or injury to persons or property arising out of the use of any materials, instructions, methods or ideas contained in the book.

Publishing Process Manager Iva Simcic

Technical Editor InTech DTP team

Cover InTech Design team

First published June, 2013

Printed in Croatia

A free online edition of this book is available at www.intechopen.com

Additional hard copies can be obtained from orders@intechopen.com

Amyloidosis, Edited by Dali Feng

p. cm.

ISBN 978-953-51-1100-9

P239