

CASE REPORT

Open Access

Dialysis disequilibrium syndrome induced by neoplastic meningitis in a patient receiving maintenance hemodialysis

Yohei Tsuchida¹, Takuma Takata¹, Toshihiko Ikarashi², Noriaki Iino^{3*}, Junichiro J Kazama³ and Ichiei Narita³

Abstract

Background: Dialysis disequilibrium syndrome is characterized by neurological symptoms resulting from cerebral edema, which occurs as a consequence of hemodialysis. Dialysis disequilibrium syndrome most often occurs in patients who have just started hemodialysis, during hemodialysis, or soon after hemodialysis; although it may also occur in patients who are under maintenance hemodialysis with pre-existing neurological disease.

Case presentation: A 70-year-old woman, who had been receiving maintenance hemodialysis for one year, was diagnosed with ovarian cancer by ascites cytological examination. Two years later, she reported severe headache and nausea during hemodialysis and was diagnosed with dialysis disequilibrium syndrome. Although brain images revealed mild hydrocephalus without any mass lesions, poorly differentiated adenocarcinoma cells were detected in her cerebrospinal fluid. These findings indicated that DDS was induced by neoplastic meningitis due to ovarian cancer metastasis.

Conclusion: Neoplastic meningitis should be considered and excluded in hemodialysis patients with dialysis disequilibrium syndrome and malignancy by cytological examination of the cerebrospinal fluid even if cerebral imaging shows no obvious lesions. This is the first reported case of dialysis disequilibrium syndrome induced by neoplastic meningitis in a patient receiving maintenance hemodialysis.

Keywords: Dialysis disequilibrium syndrome, Hemodialysis, Neoplastic meningitis

Background

Dialysis disequilibrium syndrome (DDS), first described by Kennedy et al. in 1962 [1], is characterized by neurological symptoms resulting from cerebral edema, which occurs as a consequence of hemodialysis [2]. DDS most often occurs in patients who have just started hemodialysis, during hemodialysis, or soon after hemodialysis; although it may also occur in patients who are under maintenance hemodialysis with pre-existing neurological disease [3-5].

Neoplastic meningitis (NM) is caused by dissemination of malignant cells to the leptomeninges and subarachnoid space. NM occurs in 4-15% of all patients with solid tumors and presents with variable neurological manifestations. NM deriving from tumors that were previously rarely associated

with NM, such as prostate cancer, ovarian cancer, gastric cancer, cervical cancer, and endometrial cancer, appear to be increasing [6].

Aggressive treatment including surgical resection, irradiation, local intrathecal or systemic chemotherapy is not improved patient's survival. The median survival time for patients with NM is within the range of 2-6 months [7].

Here, we report a case of DDS induced by NM in a patient receiving maintenance hemodialysis.

Case presentation

A 72-year-old woman was admitted to hospital reporting dizziness and gait disturbance. She had been under maintenance hemodialysis for three years because of advanced diabetic nephropathy. At 70 years of age, she was diagnosed with stage IIIc ovarian cancer with carcinomatous peritonitis. Poorly differentiated adenocarcinoma cells were detected in the ascites. She received a simple total

* Correspondence: niino@med.niigata-u.ac.jp

³Division of Clinical Nephrology and Rheumatology, Niigata University Graduate School of Medical and Dental Sciences, 1-757 Asahimachi-dori, Niigata, Niigata 951-8510, Japan

Full list of author information is available at the end of the article

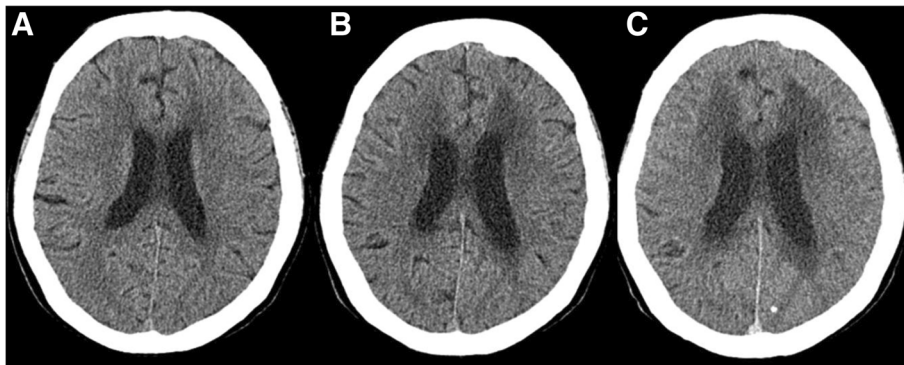


Figure 1 Cranial computed tomography images (A) one month before admission, (B) on admission, and (C) three weeks after admission. No mass lesions were present. However, mild hydrocephalus exacerbation with disappearing sulcus and ventricular distention were observed.

hysterectomy and bilateral oophorectomy after nine cycles of chemotherapy with paclitaxel and carboplatin, followed by an additional six cycles of chemotherapy.

When she admitted to hospital, her blood pressure was 113/54 mmHg, and body temperature was 36.6°C. She was conscious and a physical examination of the nervous system revealed only positive Babinski reflex sign without any other neurologic abnormality including nystagmus. We could not evaluate her gait disturbance because her II-IV metatarsal bone was fractured during a fall that occurred several days before admission. In addition to the chief complaints, transient hypertension, headache, and nausea appeared during each hemodialysis session. Her symptoms appeared about one hour after the beginning of hemodialysis, and moreover, they lasted during treatment, and subsided gradually after the session. Thus, a diagnosis of DDS was made.

Findings from laboratory examinations were as follows; hemoglobin, 11.7 g/dL; hematocrit 35.9%; white blood cells (WBCs), 3,990 WBC/ μ L; sodium, 141 mmol/L; potassium 4.9 mmol/L; chloride, 101 mmol/L; blood urea nitrogen, 56.3 mg/dL; creatinine, 6.24 mg/dL; C-reactive

protein, 0.18 mg/dL; B-type natriuretic peptide, 276.38 pg/mL; blood glucose, 137 mg/dL; hemoglobin A1c, 6.7%; and normal liver function tests.

Both contrast-enhanced cranial computed tomography and non-enhancement cranial magnetic resonance imaging did not demonstrate any intracranial pathological abnormalities including mass lesions, bleeding, and metastatic disease. Five days after the admission, she presented with consciousness disturbance and short-term memory loss, which gradually worsened especially during hemodialysis. Cranial computed tomography images showed mild exacerbation of hydrocephalus (Figure 1). Intracranial pressure at that time was 180 cmH₂O (normal intracranial pressure: 60 to 150 cmH₂O), and poorly differentiated adenocarcinoma cells, which were compatible with the metastasis of ovarian cancer cells, were detected in cerebrospinal fluid (CSF). NM had a negative effect on the patient's general health. She died 42 days after admission.

Postmortem pathological examinations revealed cancer cells covering the surface of the brain and spinal cord (Figure 2); however, no other apparent metastatic lesions were detected.

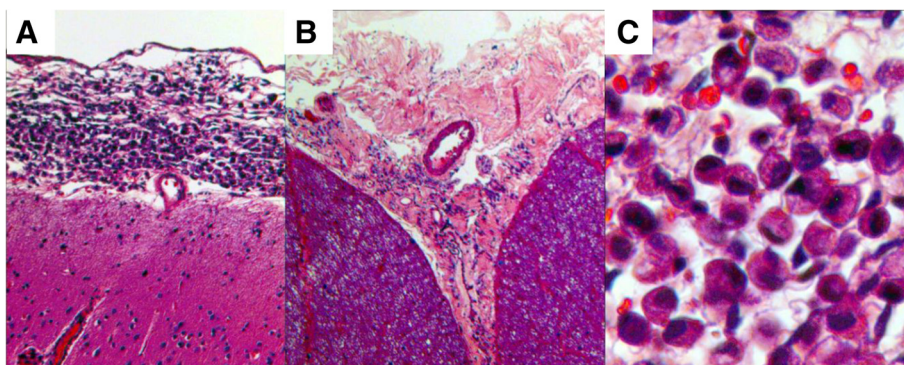


Figure 2 Photomicrographs of cancer cells. Cancer cells covering the surface of (A; original magnification x100) cerebrum and (B; original magnification x40) thoracic spinal cord (hematoxylin and eosin stain). (C) Cancer cells were poorly differentiated adenocarcinoma cells with viscous liquid in their endoplasmic reticulum (hematoxylin and eosin stain, original magnification x200).

Conclusions

We believe this the first reported case of DDS induced by NM in a patient on maintenance hemodialysis. DDS is characterized by neurological symptoms including headache, nausea, emesis, blurred vision, muscular twitching, disorientation, hypertension, tremors, and seizures attributed to cerebral edema that appears during or within 24 hours after hemodialysis. Cerebral edema is presumably caused by the significant urea gradient between blood and brain after hemodialysis, resulting in an inflow of water into the brain [1,8].

Trinh-Trang-Tan *et al.* have demonstrated that the molecular basis for the development of cerebral edema, may be a reduced expression of the urea transporter and increased expression of aquaporin in the brain, as was observed in uremic rats [9]. However, the precise pathogenesis of DDS remains unclear [2].

DDS mostly occurs in patients who have just started hemodialysis. However, it has been reported that intracranial bleeding, traumatic brain injury, and/or meningioma can cause DDS even in patients undergoing maintenance hemodialysis [3-5].

NM is caused by dissemination of malignant cells to the leptomeninges and subarachnoid space. The presence of malignant cells in the CSF establish an accurate diagnosis of NM. NM presents with variable neurological manifestations such as headache, altered mental state, nausea, and vomiting [6,10,11]. In the present case, DDS, but not NM itself, was thought to be responsible for the symptoms, because her neurological abnormalities were observed only during hemodialysis. Walters *et al.* have demonstrated that regular dialysis treatment causes considerable increases in cerebral edema without significant neurological symptoms [12]. In this case, DDS might result from cerebral edema caused by the additive effects of both hemodialysis and NM.

Imaging techniques may not be suitable for detecting NM in patients on hemodialysis. Magnetic resonance imaging with gadolinium enhancement is useful for detecting NM [6,13]. According to the recent guidelines on nephrogenic systemic fibrosis (NSF) and gadolinium-based contrast media, contrast agents with intermediate risk of NSF (Gadobenate dimeglumine, Gadofasvest trisodium, Gadoxetate disodium) and contrast agents with the lowest risk of NSF (Gadobutrol, Gadoterate meglumine and Gadoteriol) should be used with caution in patients with CKD4 and 5, including patients on dialysis, with at least 7 days between 2 injections [14]. Taken together, gadolinium-enhanced MRI may be elective modalities for diagnosis of NM in patients on dialysis. However, aggressive removal of gadolinium by hemodialysis did not have the evidence to prevent developing NSF [15]. Thus, we should keep in mind that exposure of gadolinium-based contrast agents is a significant risk factor for NSF in patients with kidney disorders [15-17]. Further, contrast-enhanced cranial

computed tomography does not have the required sensitivity to detect NM [13]. Therefore, when hemodialysis patient is suspected to have NM, cytological analysis of the CSF is required.

Patients who receive hemodialysis for end-stage renal disease are at an increased risk of developing cancer and this risk increases with age [18]. In addition, NM has become increasingly common, partly because of the prolonged survival of patients with metastatic disease [6]. Thus, it is recommended that physicians consider NM as a possible cause for DDS in patients on maintenance hemodialysis with malignancy.

In conclusion, this is the first reported case of DDS induced by NM. For patients on maintenance hemodialysis with cancer who present with DDS, NM should be considered and excluded by cytological examination of the CSF even if cerebral imaging shows no obvious lesions.

Consent

Written informed consent was obtained from the patient's brother for publication of this Case report and any accompanying images. We could not receive written informed consent from the patient directly. The patient had died of neoplastic meningitis when we planned to prepare this report.

Abbreviations

CKD: Chronic kidney disease; CSF: Cerebrospinal fluid; DDS: Dialysis disequilibrium syndrome; MRI: Magnetic resonance imaging; NM: Neoplastic meningitis; NSF: Nephrogenic systemic fibrosis; WBC: White blood cell.

Competing interests

The authors declare that they have no competing interests.

Authors' contributions

Role of Authors. All authors participated in the interpretation of the study results, and in the drafting, critical revision, and approval of the final version of the manuscript.

Acknowledgements

Editorial writing assistance of the final draft was provided by Cassandra Haley, PhD, and Julie Monk, PhD, of ProScribe Medical Communications and was funded by department fund.

Author details

¹Department of Nephrology, Nagaoka Chuo General Hospital, 2041 Kawasaki, Nagaoka, Niigata 940-8653, Japan. ²Department of Pathology, Nagaoka Chuo General Hospital, 2041 Kawasaki, Nagaoka, Niigata 940-8653, Japan. ³Division of Clinical Nephrology and Rheumatology, Niigata University Graduate School of Medical and Dental Sciences, 1-757 Asahimachi-dori, Niigata, Niigata 951-8510, Japan.

Received: 13 September 2013 Accepted: 14 November 2013

Published: 18 November 2013

References

1. Kennedy AC, Linton AL, Eaton JC: Urea levels in cerebrospinal fluid after haemodialysis. *Lancet* 1962, **1**:410-411.
2. Arieff AI: Dialysis disequilibrium syndrome: current concepts on pathogenesis and prevention. *Kidney Int* 1994, **45**:629-635.
3. Krane NK: Intracranial pressure measurement in a patient undergoing hemodialysis and peritoneal dialysis. *Am J Kidney Dis* 1989, **13**:336-339.

4. Esnault P, Lacroix G, Cungi P-J, D'Aranda E, Cotte J, Goutorbe P: **Dialysis disequilibrium syndrome in neurointensive care unit: the benefit of intracranial pressure monitoring.** *Crit Care* 2012, **16**:472.
5. Dilena R, Paglialonga F, Barbieri S, Edefonti A: **Medulloblastoma presenting as dialysis disequilibrium syndrome.** *Hemodial Int* 2011, **15**(Suppl 1):S64-S67.
6. Lombardi G, Zustovich F, Farina P, Puppa Della A, Manara R, Cecchin D, Brunello A, Cappetta A, Zagonel V: **Neoplastic meningitis from solid tumors: new diagnostic and therapeutic approaches.** *Oncologist* 2011, **16**:1175-1188.
7. Groves MD: **New strategies in the management of leptomeningeal metastases.** *Arch Neurol* 2010, **67**:305-312.
8. Silver SM, DeSimone JA, Smith DA, Sterns RH: **Dialysis disequilibrium syndrome (DDS) in the rat: role of the "reverse urea effect".** *Kidney Int* 1992, **42**:161-166.
9. Trinh-Trang-Tan M-M, Cartron J-P, Bankir L: **Molecular basis for the dialysis disequilibrium syndrome: altered aquaporin and urea transporter expression in the brain.** *Nephrol Dial Transplant* 2005, **20**:1984-1988.
10. Walkty A, Abbott B, Swirsky N, Safneck J, Embil JM: **Keeping an open mind about meningitis: a case report of carcinomatous meningitis.** *CJEM* 2011, **13**:352-356.
11. Jiménez Mateos A, Cabrera Naranjo F, González Hernández A, Fabre Pi O, Díaz Nicolás S, López Fernández JC: **Neoplastic meningitis. Review of a clinical series.** *Neurología* 2011, **26**:227-232.
12. Walters RJ, Fox NC, Crum WR, Taube D, Thomas DJ: **Haemodialysis and cerebral oedema.** *Nephron* 2001, **87**:143-147.
13. Chamberlain MC, Sandy AD, Press GA: **Leptomeningeal metastasis: a comparison of gadolinium-enhanced MR and contrast-enhanced CT of the brain.** *Neurology* 1990, **40**:435-438.
14. Thomsen HS, Morcos SK, Almén T, Bellin M-F, Bertolotto M, Bongartz G, Clement O, Leander P, Heinz-Peer G, Reimer P, Stacul F, van der Molen A, Webb JAW: **ESUR Contrast Medium Safety Committee: Nephrogenic systemic fibrosis and gadolinium-based contrast media: updated ESUR Contrast Medium Safety Committee guidelines.** *Eur Radiol* 2013, **23**:307-318.
15. Rodby RA: **Dialytic therapies to prevent NSF following gadolinium exposure in high-risk patients.** *Semin Dial* 2008, **21**:145-149.
16. Zou Z, Zhang HL, Roditi GH, Leiner T, Kucharczyk W, Prince MR: **Nephrogenic systemic fibrosis: review of 370 biopsy-confirmed cases.** *JACC Cardiovasc Imaging* 2011, **4**:1206-1216.
17. de SM IAC, de C Mesquita K, Cowper SE, Costa IMC: **Nephrogenic systemic fibrosis: concepts and perspectives.** *An Bras Dermatol* 2012, **87**:597-607.
18. Maisonneuve P, Agodoa L, Gellert R, Stewart JH, Bucciatti G, Lowenfels AB, Wolfe RA, Jones E, Disney AP, Briggs D, McCredie M, Boyle P: **Cancer in patients on dialysis for end-stage renal disease: an international collaborative study.** *Lancet* 1999, **354**:93-99.

doi:10.1186/1471-2369-14-255

Cite this article as: Tsuchida et al.: Dialysis disequilibrium syndrome induced by neoplastic meningitis in a patient receiving maintenance hemodialysis. *BMC Nephrology* 2013 **14**:255.

Submit your next manuscript to BioMed Central and take full advantage of:

- Convenient online submission
- Thorough peer review
- No space constraints or color figure charges
- Immediate publication on acceptance
- Inclusion in PubMed, CAS, Scopus and Google Scholar
- Research which is freely available for redistribution

Submit your manuscript at
www.biomedcentral.com/submit

